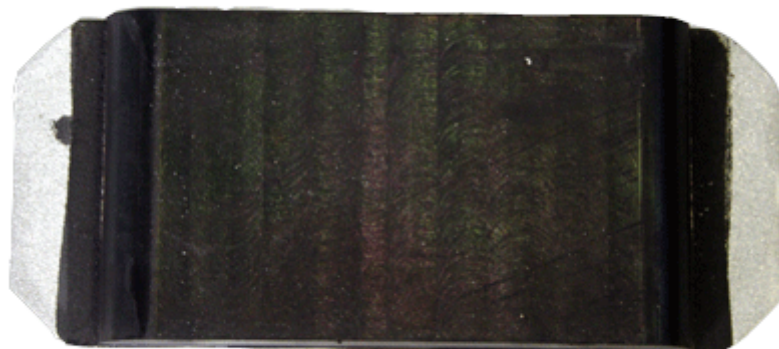
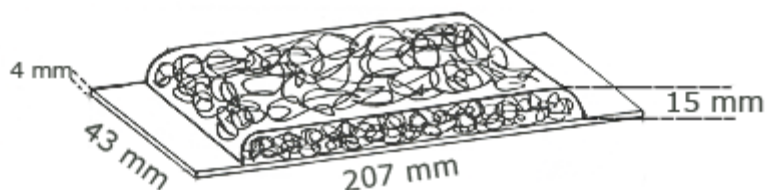


Piasrte per cabine ribaltabili



PIASTRA PICCOLA



PIASTRA MEDIA



786

PIASTRA PICCOLA IN FERRO
mm 207 x 43 x 4 - spessore gomma mm 15

787

PIASTRA MEDIA IN FERRO
mm 207 x 90 x 5 - spessore gomma mm 15

788

PIASTRA PICCOLA IN ALLUMINIO
mm 207 x 43 x 4 - spessore gomma mm 15

789

PIASTRA MEDIA IN ALLUMINIO
mm 210 x 90 x 5 - spessore gomma mm 15